

FARE CHANGE PROPOSALS



Fact Sheet

Background

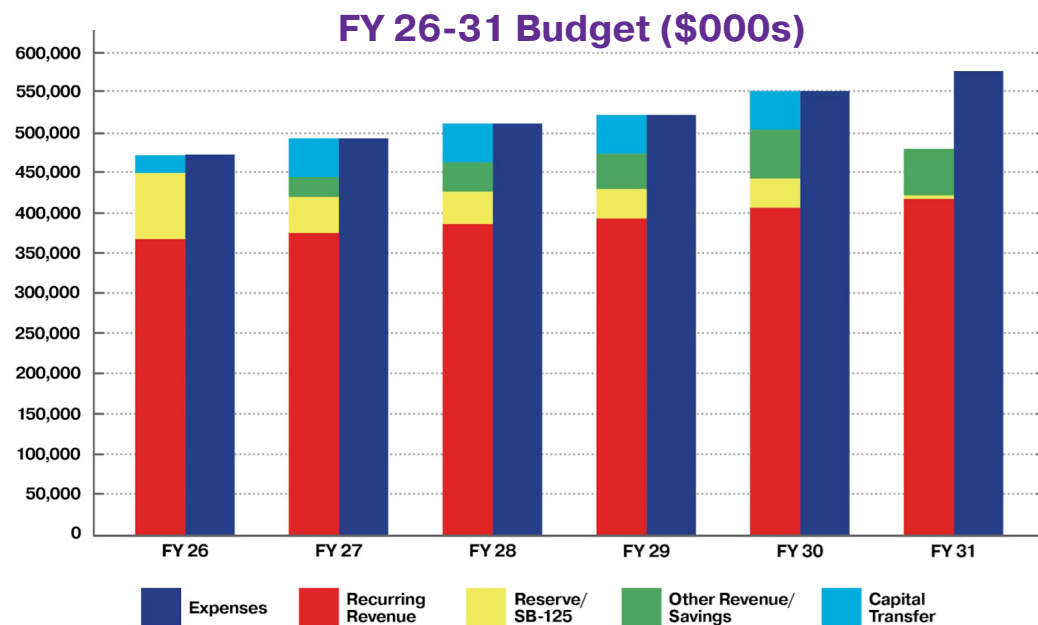
The San Diego Metropolitan Transit System (MTS) will be facing a budget gap of over \$120 million annually in a few years. The budget gap exists for several reasons, but is essentially due to rising costs, with less money coming in.

MTS is doing everything it can to reduce spending and find new sources of revenue – such as advertising, minor service modifications, delaying the purchase of more expensive electric buses and more. (You can read more in-depth about MTS's strategy to create longer term financial stability at sdmts.com/OnTrack.)

These changes help us to delay that “fiscal cliff” until 2030/31. However, they do not close the gap entirely. Another important way to help bridge the budget gap is through fare increases and/or service cuts.

Combined, it's expected that MTS needs to generate more than \$90 million over the next four years (\$23 million/year on average) from fare increases and/or service cuts. As a result, MTS is conducting a fare change study to look at the possibility of changing fares to increase revenue and keep service levels as high as possible.

See the back of this flier for two proposed fare change packages, and below for more detailed information, and how to provide feedback online.



When will fares change?

No fare changes have been approved. The MTS Board of Directors could possibly take action as early as spring 2026. From there, any proposed changes would go to the SANDAG Transportation Committee for final approval. If approved, changes are expected to start taking place in fall 2026.

What fares will change?

At this time, there are proposals to change Adult and Senior, Disabled, Medicare (SDM) fares for One-Way, Day pass and Month pass prices for all fare product types (Regional, Rural, *Rapid Express*). MTS Access fares would also change. In addition, the North County Transit – San Diego Railroad (NCTD) is also proposing changes for their services on the COASTER, SPRINTER, BREEZE and other services.

At this time, it is expected that fares will remain free for youth 18 and under. Eligible riders must apply for the Youth Opportunity Pass Program through PRONTO for free fares.

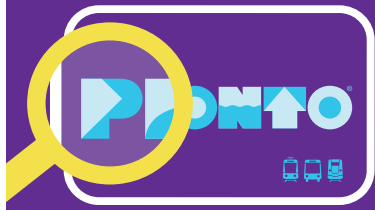
What will happen if MTS doesn't change fares?

While no formal decisions have been made, it is assumed at this time that if fare changes don't happen, MTS will likely require comparable cost-cutting of service levels.

How can I give feedback?

Please visit the Fare Change Study website to review the proposals in more detail, and complete the online survey and/or public comment form. You can also attend an in-person event throughout February. sdmts.com/FareChange





FARE CHANGE PROPOSALS



MTS Proposed Fare Change Packages

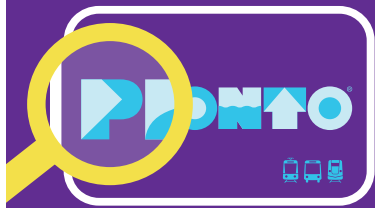
The following reflect two proposals that would achieve varying levels of revenue for the agency (a minimum of half the budget gap expected to be covered by fare and/or service level changes).

	Package A	Package B	Current
Adult One-Way	\$3	\$3.50	\$2.50
SDM One-Way	\$1.50	\$1.50	\$1.25
Adult Day Pass	\$7	\$8	\$6
SDM Day Pass	\$3.50	\$3.50	\$3
Adult Month Pass	\$90	\$100	\$72
SDM Month Pass	\$30	\$28	\$23
Adult Rapid Premium Express One-Way Pass	\$6	\$7	\$5
SDM Rapid Premium Express One-Way Pass	\$3	\$3	\$2.50
Adult Rapid Express Day Pass	\$14	\$16	\$12
SDM Rapid Express Day Pass	\$7	\$7	\$6
Adult Rapid Express Month Pass	\$125	\$140	\$100
SDM Rapid Express Month Pass	\$42	\$39	\$32
Adult Rural One-Way Pass	\$10	\$11	\$8
SDM Rural One-Way Pass	\$5	\$5	\$4
MTS Access One-Way Pass	\$6	\$7	\$5

NCTD will also be considering fare changes. Please see the website for more details.

sdmts.com/FareChange









FARE CHANGE PROPOSALS

Propuestas de ajuste de tarifas



Timeline / Línea de Tiempo

<p>October - November Octubre - Noviembre 2025</p> 	<ul style="list-style-type: none">• MTS and NCTD survey riders to understand their priorities and how changing fares might affect them.• Research potential fare changes to see how much ridership and revenue would be impacted.• MTS y NCTD encuestan a los pasajeros para comprender sus prioridades y cómo podrían afectarles los cambios de tarifas.• Investigan posibles cambios de tarifas para determinar el impacto en el número de pasajeros y los ingresos.
<p>January - February Enero - Febrero 2026</p> 	<ul style="list-style-type: none">• Staff propose options for changing fares and get feedback from transit agencies' Board of Directors• Gather more feedback from riders on fare change options at transit centers and public workshops• El personal propone opciones para cambiar las tarifas y solicita comentarios a las Junta Directivas de las agencias de transporte.• Recopilan más comentarios de los pasajeros sobre las opciones de cambio de tarifas en los centros de transporte y talleres públicos.
<p>Spring Primavera 2026</p> 	<ul style="list-style-type: none">• Staff propose final fare change to Boards (community opportunity to make formal public comments)• MTS and NCTD's Boards of Directors, then SANDAG's Transportation Committee, vote on proposed changes.• El personal propone el cambio de tarifa final a las Juntas Directivas (oportunidad para que la comunidad haga comentarios públicos formales).• Las Juntas Directivas de MTS y NCTD, y luego el Comité de Transporte de SANDAG, votan sobre los cambios propuestos.
<p>Summer/Fall Verano/Otoño 2026</p> 	<p>If approved, fare changes go into effect</p> <ul style="list-style-type: none">• Si se aprueban, los cambios de tarifas entran en vigor.

